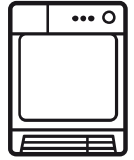


EDV705H3WB
EDV605H3WB

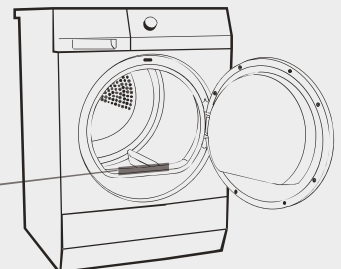
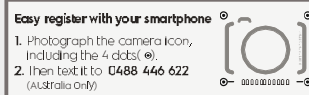


Tumble Dryer

User Manual

REGISTER YOUR PRODUCT WITH YOUR SMARTPHONE

- 1 Locate the label on the inside of your product door



- 2 Photograph the camera icon, including the 4 dots (●)



- 3 Text to **0488 446 622** (AUS only), or upload at **electrolux.com.au/photoregister**



WE'RE THINKING OF YOU

Thank you for purchasing an Electrolux appliance. You've chosen a product that brings with it decades of professional experience and innovation. Ingenious and stylish, it has been designed with you in mind. So whenever you use it, you can be safe in the knowledge that you'll get great results every time. Welcome to Electrolux.

Important Information that may impact your Manufacturer's Warranty

Adherence to the directions for use in this manual is extremely important for health and safety. Failure to strictly adhere to the requirements in this manual may result in personal injury, property damage and affect your ability to make a claim under the Electrolux manufacturer's warranty provided with your product. Products must be used, installed and operated in accordance with this manual. You may not be able to claim on the Electrolux manufacturer's warranty in the event that your product fault is due to failure to adhere to this manual.

Visit our website to:



Get usage advice, brochures, trouble shooter, service information, buy accessories & spare parts, online product registration : www.electrolux.com

CUSTOMER CARE AND SERVICE

We recommend the use of original spare parts. When contacting Service, ensure that you have the following data available. The information can be found on the rating plate. Model, PNC, Serial Number.

 Warning / Caution-Safety information.

 General information and tips

 Environmental information.

Subject to change without notice.

CONTENTS

1. IMPORTANT SAFETY INSTRUCTIONS	
1.1 Dryer Safety	3
1.2 Fire Hazards	3
1.3 Cleaning The Lint Filter	4
1.4 Drying Guide	4
2. INSTALLATION INSTRUCTIONS	5
3. USE	
3.1 The Control Panel	7
3.2 Operating Sequence	9
4. HINTS.....	11
5. TROUBLESHOOTING	
5.1 Troubleshooting	13
5.2 Accessories	13
6. TECHNICAL DATA	14
ELECTROLUX WARRANTY	19

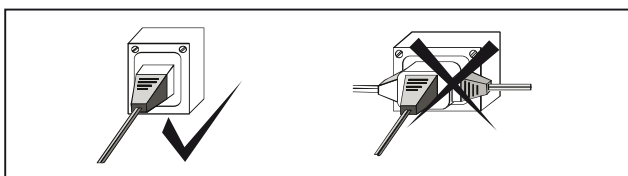
1. IMPORTANT SAFETY INSTRUCTIONS

1.1 Dryer Safety

Failure to follow these safety instructions could damage the dryer or your clothes

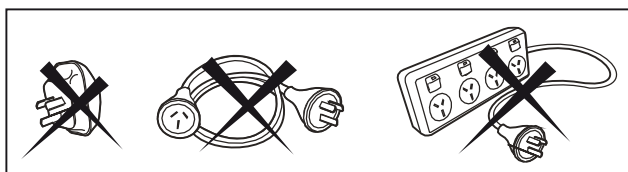
You may then not be covered by warranty for this damage.

Only plug this appliance directly into an AC power supply, which is properly earthed and has the correct voltage.



See the serial number sticker located on the bottom of the door opening for voltage information.

CAUTION : if this appliance is supplied from a cord extension set or electrical portable outlet device, the cord extension set or electrical portable outlet device must be positioned or that it is not subject to splashing or ingress of moisture. For Safety reasons we strongly advise against the use of double adaptor, extension cords or power boards.



This appliance is not intended for use by persons (including children) with reduced physical, sensory or mental capabilities, or lack of experience and knowledge, unless they have been given supervision or instruction concerning use of the appliance by a person responsible for their safety.

Children should be supervised to ensure that they do not play with the appliance.

IMPORTANT:

- If the electrical cord of this appliance is damaged, it must be replaced by the Manufacturer, Authorised Service Agent or similarly qualified person in order to avoid a hazard.
- These dryers are for drying clothes, towels and linen at home. Do not use them for any other purpose.
- Lint must not be allowed to accumulate around the tumble dryer.
- Do not dry unwashed items in the tumble dryer.

WARNING:

Never stop a tumble dryer before the end of the drying cycle unless all items are quickly removed and spread out so that the heat is dissipated.

1.2 Fire Hazards

Some fabrics are not suitable for tumble drying. The following **MUST NOT** be placed in your dryer due to the risk of a fire or an explosion :

- Items that have been spotted or soaked with vegetable oil, cooking oil, suntan oil, linseed oil, salad oil, lubrication oil or grease. Oil affected items can ignite spontaneously, especially when exposed to heat sources such as in a tumble dryer. The items become warm, causing an oxidation reaction in the oil. Oxidation creates heat. If heat cannot escape, the items can become hot enough to ignite. Pilling, stacking or storing oil-affected items can prevent heat from escaping and create a fire hazard. If it is unavoidable that fabrics that contain vegetable or cooking oil, or have been contaminated by hair care products be placed in a tumble dryer, they should first be washed in hot water with extra detergent - this will reduce, but not eliminate the hazard. The final part of tumble dryer cycle occurs without heat (Cooling cycle) to ensure that the items are left at the temperature that ensures that the items will not be damaged.

- Items that have previously been cleaned in, washed in, or spotted with petrol/gasoline, industrial chemicals used only for cleaning, dry-cleaning solvents or other flammable or explosive substances are highly flammable. Highly flammable or explosive commonly found around the house include acetone, (nail polish remover) denatured alcohol, petrol/gasoline, kerosene, some spot removers, turpentine, waxes and wax removers should not be put in the dryer. Items containing foam rubber (also known as latex foam) or similarly textured rubber-like materials. Foam rubber materials can produce fire by spontaneous combustion when heated.
- Rubber-backed articles, clothes fitted with foam rubber pads, pillows, rubber boots and rubber-coated sports shoes.

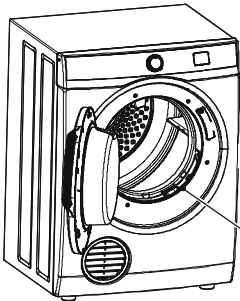
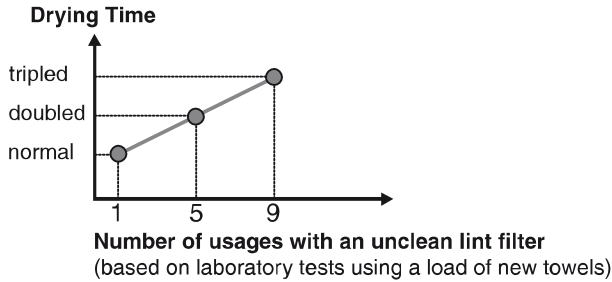
For your safety, and to reduce the risk of fire or an explosion, **DO NOT store or use petrol or other inflammable vapours and liquids near your dryer.**

1.3 Cleaning The Lint Filter

LINT BUILD-UP IS A FIRE HAZARD

A clean lint filter reduces drying times, saves energy and avoids overheating. Overheating may also damage your clothes.

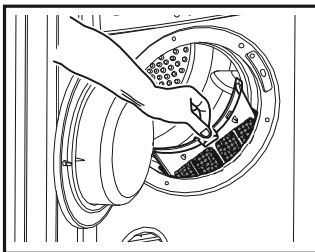
What happens If I forget to clean the lint filter?



The lint filter is located at the front of your dryer at the bottom of the door opening.

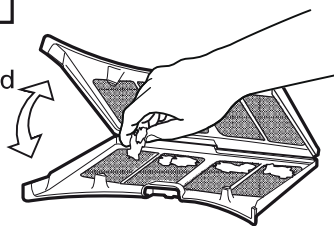
LINT FILTER

You must clean this lint filter after every load.



To remove the lint filter open the door and press the two pads together. Pull the lint filter out of the pocket.

Open apart the lint filter and wipe or peel off the lint.



Ensure the lint filter “Clicks” when replacing.

- Never operate your dryer without the lint filter.
- Do not allow lint to build around your dryer.
- A torn or damaged lint filter must be replaced immediately.
- Overloading can increase lint build-up because the airflow is reduced.

To avoid potential fire hazards, we recommend that you pay a qualified service technician to periodically clean your dryer. You must do this also when you change your mounting from upright to inverted, or vice versa.

1.4 Drying Guide

Your load, when dry must not exceed the rated capacity

- **6.0 kg for the EDV605H3WB Dryer**
- **7.0 kg for the EDV705H3WB Dryer**

(See page 11 for a table of average weights of laundry items)

Always check your labels for the drying symbol which this international Care Labelling Code now uses.



• **Permanent press and synthetics** - take out as soon as the dryer stops to reduce wrinkles.

• **Woollen articles** - not recommended. Pull them to their original shape, then dry them flat.

• **Woven and loop knit materials** - may shrink, by varying amount, depending on their quality. Do not use the “Extra” setting for these fabrics, Always stretch them out immediately after drying.

• **Fibre or leather materials** - always check the manufacturer’s instructions.

• **Baby clothes and night gowns** - acrylic clothing or sleepwear use only on the “Iron” setting.

• **Rubber and plastics** - Do not dry any items made from or containing rubber or plastics, such as aprons, bibs, babies’ water proof napkins, curtains, tablecloths, shower caps, clothes fitted with foam rubber pads, pillows, galoshes, or rubber coated tennis shoes.

• **Fibreglass** - not recommended, glass particles left in the dryer could be picked up by your clothes the next time you use the dryer and irritate your skin.

Fabric softeners or similar products should not be used in a tumble dryer to eliminate the effects of static electricity unless this practice is specifically recommended by the manufacturer of the fabric softener or product.

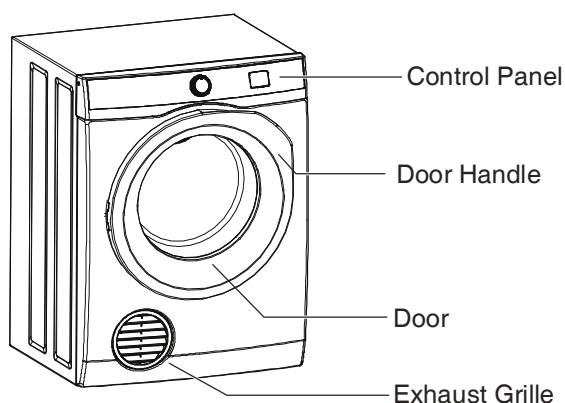
Note: We strongly advise against the use of fabric conditioners of the sheet type that are added to the clothes in the drum. These products may lead to rapid blockage of the lint filter and inefficient operation of your dryer.

2. INSTALLATION INSTRUCTIONS

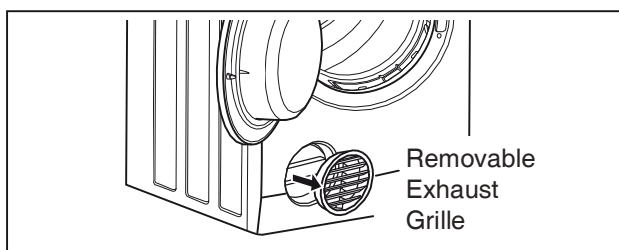
You can choose to put your dryer :

- on the floor
- on a work bench upside down or upright.
- on a wall.

The appliance must not be installed behind a lockable door, a sliding door or a door with a hinge on the opposite side to that of the tumble dryer in such away that a full opening of the tumble dryer door is restricted.



The exhaust grille has a range of positions, which allows you to select the optimum exhaust air angle. Simply hold the grille and rotate it until it hits the built-in stop.



Do not install your dryer in a cupboard or small un-vented laundry unless you are using a venting kit.

There are 2 VENTING OPTIONS

- Front
- Rear - using a venting kit (optional Extra)

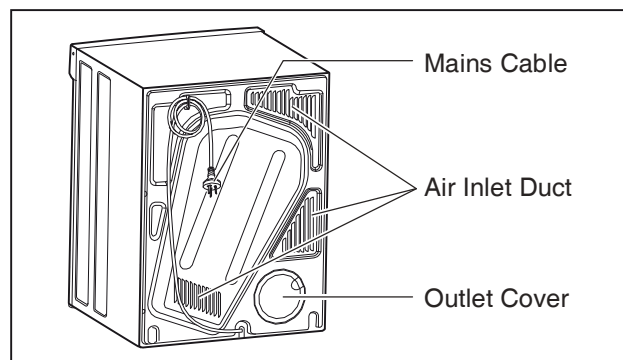
Vending Kit (Optional Extra)

DVK005K - Through the wall

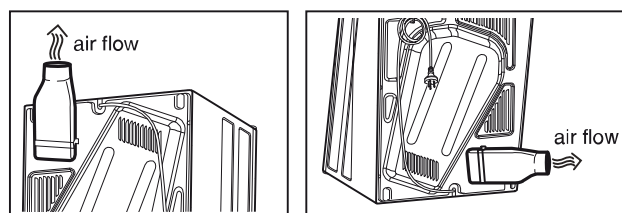
DVK006 - Universal flexible hose

Important: Use only kits approved by Electrolux Home Products Pty. Ltd. with your dryer. Contact the Electrolux Home Products Pty. Ltd. Spare Parts Centre for the list of approved kits. The exhaust duct must not exceed 2 metres in length at 100mm diameter. If connecting the dryer to a common ducting system, safety advice should be requested from the manufacturer.

If you choose to use the optional vent kit, the exhaust grille at the front of the dryer will need to be replaced with the outlet cover from the back of the dryer. Gently prise open the grille, using a thin bladed tool. Next, remove the cover from the back and clip it into the grille space at the front. The exhaust grille is not required when using a vent kit.



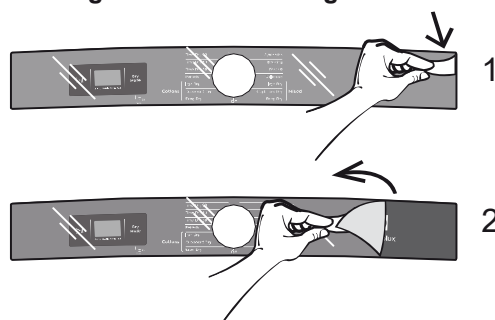
You can position the vent kit at the back of the dryer to remove air upwards or sideways.



Inlet and outlet points need clear airflow to prevent overheating, so ensure there is adequate ventilation. (i.e. open window or external door.)



If a venting kit is used and the exhaust is discharged out of the room, there must be adequate ventilation to avoid the back flow of gases in to the room from appliances burning other fuels, including open fires, when operating the tumble dryer. This is not applicable where a venting hose is directed to an open window. The exhaust air must not be discharged into a flue which is used for exhausting fumes from appliances burning gas or other fuels.

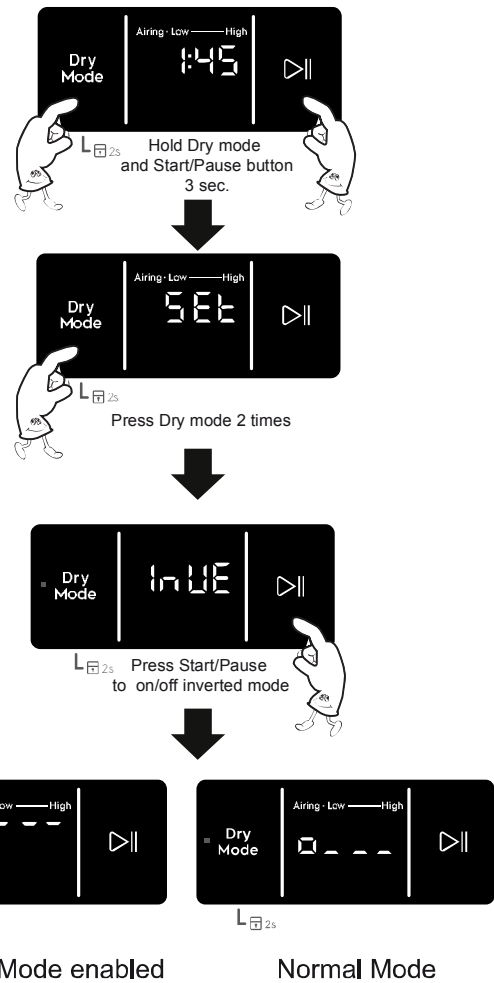
i ! Please remove protective film from control panel trim using a sticky tape as shown below before attaching inverted mounting trim.



Inverted Mounting Mode

If machine is installed up side down follow instruction below to adjust the display for correct reading.

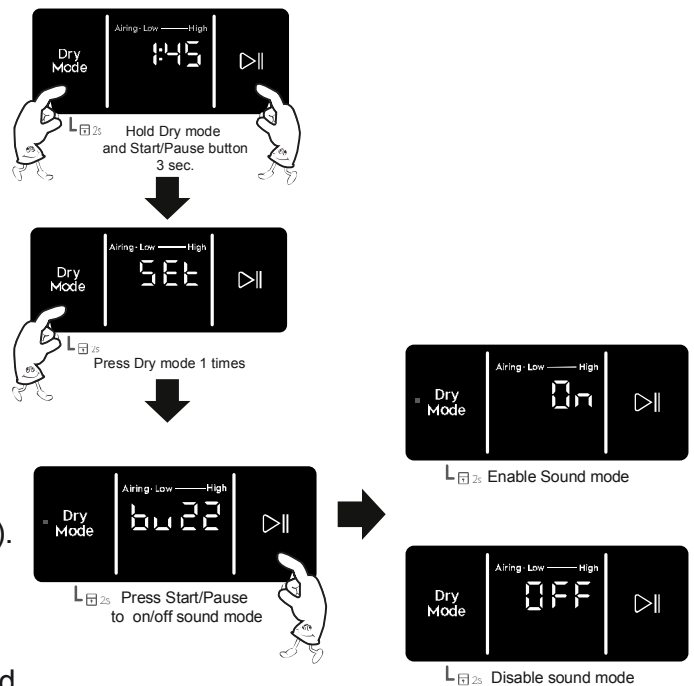
- Switch the machine "ON"
Press and hold Dry Mode and Start/Pause buttons for 3 seconds to go into Setup Mode. display will show "SEt".
- Press Dry Mode button 2 times. display will show "InVE".
- Press Start/Pause to on/off Normal mode or Inverted mode
Display will show
 (Inverted Mode enabled) or
 (Normal Mode)
- Wait 2 seconds. Display will blink once and tone KeyAccept is played to indicate that the new setting is saved.
- Turn the knob to to exit Setup.



Enable/ Disable Buzzer Sound

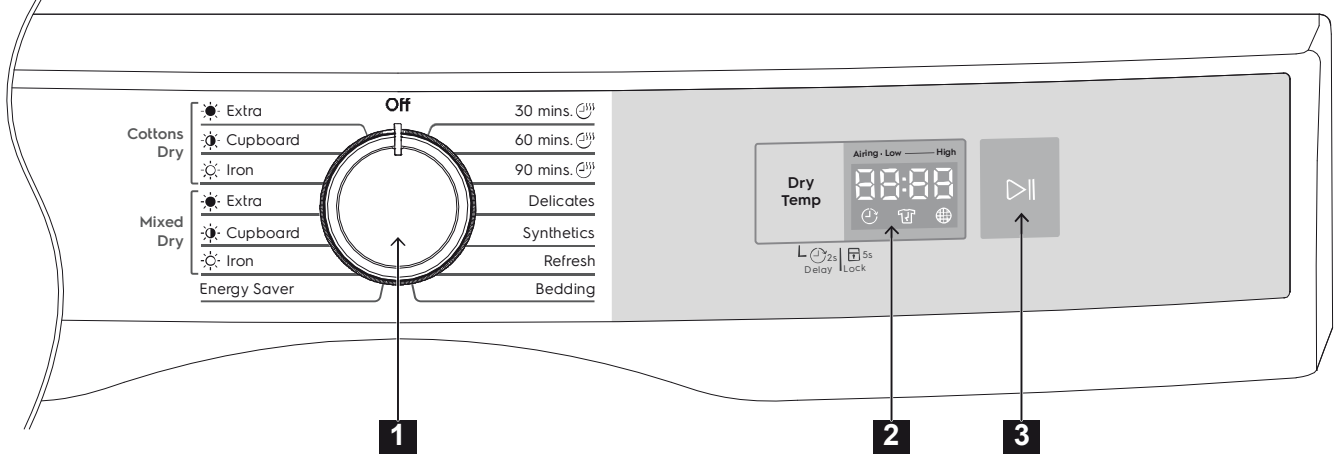
To disable or enable buzzer sound

- Press and hold Dry Mode and Start/Pause buttons for 3 seconds to go into Setup Mode. Display will show "SEt". Pressing Start/Pause or turning the knob at this point will exit Setup.
- Press Dry Mode button once. Display will show "bUZZ".
- Press Start/Pause button to enable/disable buzzer. Display will show "On" (buzzer enabled) or "OFF" (buzzer disabled).
- Wait 2 seconds. Display will blink once and tone KeyAccept is played to indicate that the new settings is saved.
- Turn the knob to exit Setup.

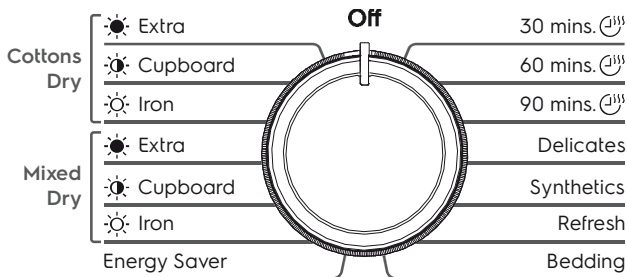


3. USE

3.1 The Control Panel



1 PROGRAM SELECTOR KNOB



- Turn the Program Selector knob to choose a drying program. The table “Program Guide” shown on page 10 will help you in selecting the right program.

i NOTES : The Program Selector knob is not a timer. Once you select a dry program, the Program Selector knob will stay at that position for the whole dry cycle.

2 DISPLAY

The display shows the following information

DRYING CYCLE IN PROGRESS



After selecting a program, the duration is displayed in hours and minutes (for example 1:45 which means 1 hour and 45 minutes)

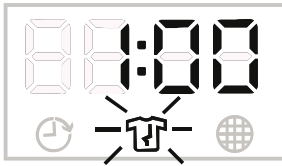
The duration is calculated automatically on the basis of the maximum recommended load for each type of fabric.

After the program has started, the time remaining is updated every minute.

COOLING CYCLE IN PROGRESS

Your dryer will automatically switch off the heater at the end of every cycle. This is important as it remove residual heat from clothes and help prevent creasing.

ANTI CREASE CYCLE IN PROGRESS

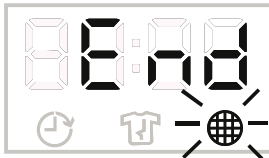


The anti crease cycle is designed to help prevent creases forming in the clothes after normal drying cycle has ended. The anti crease progress indicator will start blinking with clean filter during the time anti crease phase is running. The drum will rotate for 5 seconds every minute and will go for 1 hour. Anti crease phase cannot be disabled.

i NOTE:

Anti crease can be stopped at any time by opening the door and removing the clothes.

END OF PROGRAM and CLEAN FILTER REMINDER



When the drying program is completed, the display will show text "End"

The Clean Filter LED turns on and blinks at the end of each dry cycle to serve as a reminder to user to clean lint filter at the end of each load.

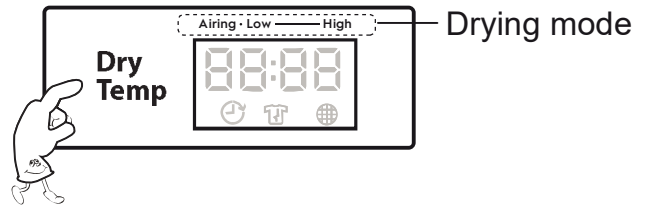
3 START/PAUSE BUTTON

This button allows you to start or pause the dryer to check the contents or perhaps add more clothes.

NOTE: The dryer will not start unless the door is closed. (If door is not closed you will hear 9 Beeps and "E40" on display.)

SETTING DRYING MODE

This mode gives you the option of selecting different drying levels.

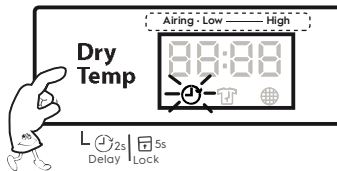


Touch this touch pad to select the drying mode. Corresponding light for each mode is shown on display. Drying mode can only be selected during initial set up.

- **Low**
For small load
- **Mid**
For drying most fabrics.
- **High**
For drying delicates and synthetics at lower heat for maximum care of the fabrics. The Low Heat setting will cause the heater to cycle on for shorter time than the normal setting.
- **Airing :**
This setting does not heat. ONLY circulate the air in the dryer to shake out dust and refresh clothes

Program	Temp			
	Airing	Low	Mid	High
Off				
30 mins	○	○	○	○
60 mins	○	○	○	○
90 mins	○	○	○	○
Delicates		○	○	○
Synthetics		○	○	○
Refresh				○
Bedding		○	○	○
Energy Saver				○
Mixed Dry - Iron		○	○	○
Mixed Dry - Cupboard		○	○	○
Mixed Dry - Extra		○	○	○
Cottons Dry - Iron		○	○	○
Cottons Dry - Cupboard		○	○	○
Cottons Dry - Extra		○	○	○

DELAY START



- This dryer can set delay start time 30,60,90 mins, 2h - 20h by 1 hour the increment time.
- To set this option choose drying time and press "Delay Temp" display will show time and ⌚.
- User can select time and press Start/Pause button

i NOTE:

- Recommend to select program before set delay start option.

Change And Cancel Delay Start

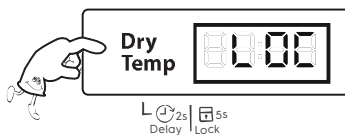
After user set delay start for waiting operate machine.

- **Change time**
Press Start/Pause and press Delay Start, time will reset to 0h and user can select time, again when finish press Start/Pause for start Delay Start again.
- **Cancel time**
Press Start/Pause and press Delay Start, time will reset to 0h and press Start/Pause for normal operate program

CHILD LOCK

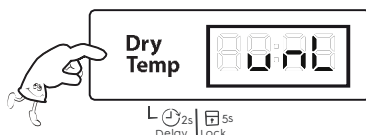
Activating Child Lock

To activate Child Lock touch and hold Dry Temp touch pad for 5 seconds. Display will show "LOC" for 2 seconds then back to cycle duration.



Deactivating Child lock

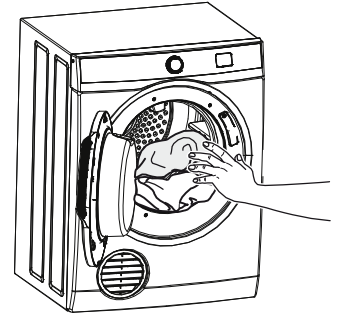
To deactivate Child Lock touch and hold Dry Temp touch pad for 5 seconds. Display will show "unL" for 2 seconds then back to cycle duration.



3.2 Operating Sequence

Step 1

Load your dryer loosely until it is no more than **TWO THIRDS FULL**. Clothes must tumble freely in a dryer. Don't cram them in. Wet clothed fluff up when dry.



Overloading will :

Reduce efficiency Increase drying time
Increase the risk of creasing.

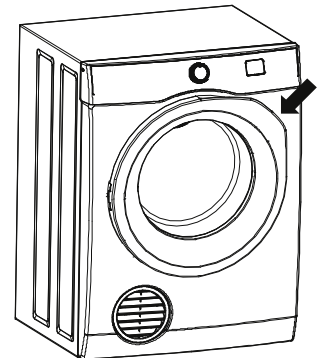


Do not load clothes or other articles which are dripping wet or have sand and grit on them into your dryer.

Step 2

Switch On

The dryer will not operate unless the door fully pressed in.




Step 3

Turn the Program Selector knob to choose drying program you want.

Program Guide

Program	Load Size Info	Textile Type Info
Off	-	This position to reset program/switching off the machine.
Cottons Dry		
☀ Extra	Full	For thick fabrics, Cotton Towel, Jeans.
☀ Cupboard	Full	For fabric that do not need to be ironed, Cotton underwear.
☀ Iron	Full	For fabric that do need ironed, Cotton Polo shirt, Cotton T-Shirt.
Mixed Dry		
☀ Extra	Half	For thick fabrics, mixed load consisting of Cotton and Synthetic.
☀ Cupboard	Half	For fabrics that do not need to be ironed, mixed load consisting of Cotton and Synthetic.
☀ Iron	Half	For fabrics that do need to be ironed, mixed load consisting of Cotton and Synthetic.
Energy Saver	Full	Cycle to be used to dry cotton with “Cotton Cupboard” dryness level, with maximum energy saving.
Time Dry		
☀ 30 mins.	1.0 - 1.5 kg	For Cotton fabric selected drying time for 30 minutes.
☀ 60 mins.	3.0 kg	For Cotton fabric selected drying time for 60 minutes.
☀ 90 mins.	4.0 kg	For Cotton fabric selected drying time for 90 minutes.
Delicates	3.5 kg	For delicates fabrics that are heat-sensitive, Silk, Fine Fabrics and Lingerie.
Synthetics	3.5 kg	For Polyester fabric, normal synthetic.
Refresh	5 pcs.	For fabrics that have been in storage long time, normal synthetic that need to be damp after.
Bedding	Half	For Bedding items.

 **WARNING: Never stop a tumble dryer before the end of the drying cycle unless all items are quickly removed and spread out so that the heat is dissipated.**

Reversing Action


The drum is designed to rotate in both direction, clockwise and anti-clockwise. This reduces tangling and gives more even drying in a shorter time.

Step 4

Turn the Program Selector knob to “OFF” When you have finished using the dryer to turn off the power, then switch off at the power point. It is recommended to power off the appliance when not in use.

Step 5

Clean Lint Filter

 After every load clean the lint filter to reduce drying time and avoid overheating.

Checking the Load

To check the dryness or add clothes during the cycle, simply open the door. The dryer will beep several times indicating the door is open. If further drying is required, close the door and then press the **Start/Pause** button to continue.

For the best drying performance, only add or remove clothes at the beginning of the drying cycle.

Next time you turn your dryer on it will be ready to go as it remembers the last program, Temperature and Option setting used. You can change the setting if you wish.

4. Hints

- Never tumble dry the following: Delicate items such as net curtains, woollen, silk, fabric with metal trim, nylon tights, bulky materials such as anoraks, blankets, eiderdown, sleeping bags, feather quilts and any item containing rubber foam or materials similar to foam rubber.
 - Do not place in your dryer undergarments such as bras and corsets that contain metal reinforcements. Your dryer may be damaged if metal parts were to come loose from the garment. Place such items in a bag designed for this purpose.
 - Check and empty pockets. Clips, pens, nails and pins can damage both the dryer and your clothes. Other items such as matches or cigarette lighters will cause a fire.
 - Close all press studs, hooks, eyes and zips that may catch on something else. Tie all belts and apron strings to prevent tangling.
 - Drying time will depend on fabric type and construction, load size and wetness. Save time and money and always spin the load as dry as possible in your washing machine.
 - Drying time will also be affected by voltage fluctuations, room temperature and humidity. Clothes will dry more slowly on a cool or humid day.
 - For best results, sort the load according to fabric types. Such as heavy items which may take longer to dry, eg towels, flannelette sheets etc, than ones which dry quickly, eg poly/cotton shirts and sheets.
 - Avoid drying dark clothes with light coloured items such as towels as lint will show on the dark clothes.
- Note: Some fabrics will collect lint from other clothes and items. Separate the lint “givers” and the lint “collectors” to minimise this problem.**
- Clothes that give lint include towels, nappies, chenille. Clothes that collect lint include corduroy, synthetics and permanent press garments.
- If individual items are still damp after drying, please add appropriate Time Drying program. This may be necessary particularly for multilayered items (e.g. jeans, items with collars or pocket) or very small loads

- Always clean the lint filter-this will reduce drying time and save you money.
- The laundry must be thoroughly spun before tumble drying.
- Easy-care items eg shirts, should be briefly pre-spun before drying (depending on the crease resistance approximately 30 seconds)
- To avoid static charge when drying is completed, use either a fabric softener when you are washing the laundry or a fabric conditioner specifically for tumble dryers.
- Remove the laundry when the dryer has finished drying.
- Do not over-dry laundry, this avoids creasing and saves energy.
- Clothes or towels containing sand or grit should be washed first.
- Due to variations in dryer load fabric texture and thickness it is possible that not all items will be dried evenly. If you experience uneven dryness on Cupboard program please use either Extra Dry or Timer Program but be mindful of the type of fabric being dried to avoid overdrying certain types of fabric. Always follow drying instructions attached to the items intended to be dried in a clothes dryer.

To help you, here is a list of the average weights of some common laundry items.

Sheet	700 - 1000g
Tablecloth	400 - 500g
Kitchen towel	70 - 120g
Table napkin	50 - 100g
Towelling hand towel	150 - 250g
Bathrobe	1000 - 1500g
Men's shirt	200 - 300g
Pillowcase	100 - 200g
Men's pyjamas	400 - 500g
Ladies nightdress	200 - 250g
Bath towel	300 - 400g

5. TROUBLESHOOTING & ACCESSORIES

5.1 Troubleshooting

Check the points listed here before you call for help, and make sure that you have followed the Important safety Instructions on pages 3 and 4.

Problem	Possible causes
The dryer will not start:	<ul style="list-style-type: none"> • Plug is not firmly in socket, or power not turned on. • You have blown a fuse. Check the power point with another appliance. • You have not closed the dryer door or pushed in the door safety switch button.
Your clothes are still wet/not fully dried	<ul style="list-style-type: none"> • Load is too small for autosensing program or load consists of some multilayered items. Use Time Dry program to complete drying, refer Hints in section 4. • The selected drying time was insufficient. Select a longer time setting. • Longer time may be needed when the room temperature is 10 °C or less. • Check that the lint filter is not blocked. • Check to see that you have read all the instructions carefully. • Contact the Service Center if you are still having problems. Write down the model and serial numbers and the date of purchase before you ring. The Service Center will need this information.



WARNING! Deactivate the appliance before you do the checks.

Alarm Code:

E40	The appliance door is open or not closed correctly. Please check the door!
E40	The main supply is unstable. Wait until the main supply is stable.
E91	No communication between electronic elements of the appliance. Switch off and switch on again.

5.2 Accessories

You can buy venting kits (as mentioned on page 5) from your local appliance shop or Electrolux Home Products Pty.Ltd. Parts Distributor.

Important

To operate efficiently the clothes dryer must have an unrestricted air supply and exhaust ventilation.

Service calls resulting from installation where ventilation is restricted are not covered by warranty.

THE COST OF THIS TYPE OF CALL WILL BE CHARGED TO THE CUSTOMER

Should you require further instructions in the use and care of your clothes dryer please contact the CUSTOMER CENTER on the phone number listed below:

Australia....**1300 363 640 8 am to 7 pm EST & 8 pm EDST** Monday to Friday

NewZealand....**(09) 573 2384 8 am to 5 pm** Monday to Friday

If you have a warranty or spare parts enquiry you should call the number listed on page 19.

6. TECHNICAL DATA

Dimensions (Height / Width / Depth)	795 mm x 600 mm x 560 mm		
Power Supply (Voltage / Frequency)	230 - 240 V / 50 Hz		
Heater Power (Watt)	2100 W		
Maximum Capacity	Model:	EDV605H3WB	6.0 kg
		EDV705H3WB	7.0 kg

NOTE.

NOTE.

NOTE.



Product Date of Purchase

Model Serial Number

Purchaser's Name

Full Postal Address

.....

Retailer (Shop)

Address

Please keep this book and your Proof of Date of Purchase to show the technician if you need service during the warranty period.



FOR SALES IN AUSTRALIA AND NEW ZEALAND
APPLIANCE: ELECTROLUX DRYER

This document sets out the terms and conditions of the product warranties for Electrolux Appliances. It is an important document. Please keep it with your proof of purchase documents in a safe place for future reference should there be a manufacturing defect in your Appliance. This warranty is in addition to other rights you may have under the Australian Consumer Law.

1. In this warranty:

- (a) 'ACL' or 'Australian Consumer Law' means Schedule 2 to the Competition and Consumer Act 2010;
- (b) 'Appliance' means any Electrolux product purchased by you and accompanied by this document;
- (c) 'ASC' means Electrolux's authorised serviced centres;
- (d) 'Electrolux' is the brand controlled Electrolux Home Products Pty Ltd of 163 O'Riordan Street, Mascot NSW 2020, ABN 51 004 762 341 in respect of Appliances purchased in Australia and Electrolux (NZ) Limited (collectively "Electrolux") of 3-5 Niall Burgess Road, Mount Wellington, in respect of Appliances purchased in New Zealand;
- (e) 'Warranty Period' means the period specified in clause 3 of this warranty;
- (f) 'you' means the purchaser of the Appliance not having purchased the Appliance for re-sale, and 'your' has a corresponding meaning.

2. Application: This warranty only applies to new Appliances, purchased and used in Australia or New Zealand and is in addition to (and does not exclude, restrict, or modify in any way) other rights and remedies under a law to which the Appliances or services relate, including any non-excludable statutory guarantees in Australia and New Zealand.

3. Warranty Period: Subject to these terms and conditions, this warranty continues for in Australia for a period of 24 months and in New Zealand for a period of 24 months, following the date of original purchase of the Appliance.

4. Repair or replace warranty: During the Warranty Period, Electrolux or its ASC will, at no extra charge if your Appliance is readily accessible for service, without special equipment and subject to these terms and conditions, repair or replace any parts which it considers to be defective. Electrolux may, in its absolute discretion, choose whether the remedy offered for a valid warranty claim is repair or replacement. Electrolux or its ASC may use refurbished parts to repair your Appliance. You agree that any replaced Appliances or parts become the property of Electrolux.

5. Travel and transportation costs: Subject to clause 7, Electrolux will bear the reasonable cost of transportation, travel and delivery of the Appliance to and from Electrolux or its ASC. Travel and transportation will be arranged by Electrolux as part of any valid warranty claim.

6. Proof of purchase is required before you can make a claim under this warranty.

7. Exclusions: You may not make a claim under this warranty unless the defect claimed is due to faulty or defective parts or workmanship. This warranty does not cover:

- (a) light, globes, batteries, filters or similar perishable parts;
- (b) parts and Appliances not supplied by Electrolux;
- (c) cosmetic damage which does not affect the operation of the Appliance;

- (d) damage to the Appliance caused by:
 - (i) negligence or accident;
 - (ii) misuse or abuse, including failure to properly maintain or service;
 - (iii) improper, negligent or faulty servicing or repair works done by anyone other than an Electrolux authorised repairer or ASC;
 - (iv) normal wear and tear;
 - (v) power surges, electrical storm damage or incorrect power supply;
 - (vi) incomplete or improper installation;
 - (vii) incorrect, improper or inappropriate operation;
 - (viii) insect or vermin infestation;
 - (ix) failure to comply with any additional instructions supplied with the Appliance;

In addition, Electrolux is not liable under this warranty if:

- (a) the Appliance has been, or Electrolux reasonably believes that the Appliance has been, used for purposes other than those for which the Appliance was intended, including where the Appliance has been used for any non-domestic purpose;
- (b) the Appliance is modified without authority from Electrolux in writing;
- (c) the Appliance's serial number or warranty seal has been removed or defaced

8. How to claim under this warranty: To enquire about claiming under this warranty, please follow these steps:

- (a) carefully check the operating instructions, user manual and the terms of this warranty;
- (b) have the model and serial number of the Appliance available;
- (c) have the proof of purchase (e.g. an invoice) available;
- (d) telephone the numbers shown below.

9. Australia: For Appliances and services provided by Electrolux in Australia: Electrolux goods come with guarantees that cannot be excluded under the Australian Consumer Law. You are entitled to a replacement or refund for a major failure and for compensation for any other reasonably foreseeable loss or damage. You are also entitled to have the Appliance repaired or replaced if the Appliance fails to be of acceptable quality and the failure does not amount to a major failure. 'Acceptable quality' and 'major failure' have the same meaning as referred to in the ACL.

10. New Zealand: For Appliances and services provided by Electrolux in New Zealand, the Appliances come with a guarantee by Electrolux pursuant to the provisions of the Consumer Guarantees Act, the Sale of Goods Act and the Fair Trading Act. Where the Appliance was purchased in New Zealand for commercial purposes the Consumer Guarantee Act does not apply.

11. Confidentiality: You accept that if you make a warranty claim, Electrolux and its agents including ASC may exchange information in relation to you to enable Electrolux to meet its obligations under this warranty.

Important Notice

Before calling for service, please ensure that the steps listed in clause 8 above have been followed.

<p>FOR SERVICE or to find the address of your nearest authorised service centre in Australia PLEASE CALL 13 13 49 For the cost of a local call (Australia only)</p>	<p>AUSTRALIA ELECTROLUX HOME PRODUCTS 163 O'Riordan Street, Mascot NSW 2020 electrolux.com.au</p>	<p>FOR SPARE PARTS or to find the address of your nearest spare parts centre in Australia PLEASE CALL 13 13 50 For the cost of a local call (Australia only)</p>
<p>FOR SERVICE or to find the address of your nearest authorised service centre in New Zealand PLEASE CALL 0800 10 66 10 (New Zealand only)</p>	<p>NEW ZEALAND ELECTROLUX (NZ) Limited 3-5 Niall Burgess Road, Mount Wellington electrolux.co.nz</p>	<p>FOR SPARE PARTS or to find the address of your nearest spare parts centre in New Zealand PLEASE CALL 0800 10 66 20 (New Zealand only)</p>

