



## OWNER'S MANUAL

# FRIDGE & FREEZER

---



Before beginning installation, read these instructions carefully. This will simplify installation and ensure that the product is installed correctly and safely. Leave these instructions near the product after installation for future reference.

**ENGLISH**



MFL71817226  
Rev.03\_062122

[www.lg.com](http://www.lg.com)

Copyright © 2021-2022 LG Electronics Inc. All Rights Reserved.

## 12 OPERATION

# OPERATION

## Before Use

### Notes for Operation

- Users should keep in mind that frost can form if the door is not closed completely or if the humidity is high during the summer.
- Ensure there is sufficient space between food stored on the shelf or door basket to allow the door to close completely.
- Opening the door for long periods can cause a significant increase of the temperature in the compartments of the appliance.
- If the refrigerating appliance is left empty for long periods, switch off, defrost, clean, dry, and leave the door open to prevent mould developing within the appliance.

### Door Open Alarm

The alarm sounds 3 times in 30 second intervals if the door is left open or not completely closed for 1 minute.

#### NOTE

- Contact the LG Electronics customer information centre if the alarm sound continues even after closing all doors.

### Failure Detection

The appliance can automatically detect problems during the operation.

#### NOTE

- If a problem is detected, the appliance may not operate and an error code is displayed even when any button is pressed.
- If an error code is indicated on the display, do not turn off the power. Immediately contact the LG Electronics customer information centre and report the error code. If you turn off the power,

the repair technician from the our information centre may have difficulty finding the problem.

### Suggestion for Energy Saving

- For the most efficient use of energy, make sure that door bins, drawers and shelves are assembled properly.
- Ensure there is sufficient space between stored foods. This allows cold air to be circulated evenly and lowers electricity bills.
- Store hot food only after it has cooled in order to prevent dew or frost.
- When storing food in the freezer compartment, set the freezer temperature lower than the temperature indicated on the food.
- Do not set the temperature of the appliance lower than needed.
- Do not put food near the temperature sensor of the fridge compartment. Keep a distance of at least 3 cm from the sensor.
- Note that a temperature rise after defrosting has a permissible range in the appliance specifications. If you wish to minimise the impact on the food storage due to a temperature rise, seal or wrap the stored food in several layers.
- The automatic defrosting system in the appliance ensures that the compartment remains free of ice buildup under normal operating conditions.

### Storing Foods Effectively

- Food may freeze or spoil if stored at the wrong temperature. Set the refrigerator to the correct temperature for the food being stored.
- Store frozen food or refrigerated food inside sealed containers.
- Check the expiration date and label (storage instructions) before storing food in the appliance.

- Do not store food for a long period of time if it spoils easily at a low temperature.
- Do not place unfrozen food in direct contact with food that is already frozen. It could be necessary to reduce the quantity to be frozen if freezing every day is anticipated.
- Place the refrigerated food or frozen food in each fridge or freezer compartment immediately after purchasing.
- Store raw meat and fish in suitable containers in the refrigerator, so that it is not in contact with or drip onto other food.
- Refrigerated foods and other food items can be stored on top of the vegetable drawer.
- Avoid refreezing any food which has been completely thawed. Freezing any food which has been completely thawed again will lower its taste and nutrition.
- Cool hot food before storing. If too much hot food is placed inside, the internal temperature of the appliance can increase and negatively affect other foods stored in the appliance.
- Do not overfill the appliance. Cold air can not circulate properly if the appliance is overfilled.
- If you set an excessively low temperature for food, it may become frozen. Do not set a temperature lower than the required temperature for the food to be stored correctly.
- If there are chill compartments in the appliance, do not store vegetables and fruits with higher moisture content in the chill compartments as they may freeze due to the lower temperature.
- In the event of a blackout, call the electricity company and ask how long it is going to last.
  - You should avoid door openings while the power is off.
  - When the power supply gets back to normal, check the condition of the food.
- To get better air circulation, insert all inner parts like baskets and shelves.

## Freezing the Maximum Amount of Food

If large quantities of food are to be stored, the icemaker should be taken out of the appliance and the food should be stacked directly on the freezer shelves in the freezer compartment.

### NOTE

- Insert the icemaker in the right position.

## Maximum Freezing Capacity

- **Express Freeze** function will allow the freezer to reach its maximum freezing capacity. This generally takes up to 21 hours and automatically switches off.
- **Express Freeze** must be switched on when fresh products are placed in the freezer compartment.

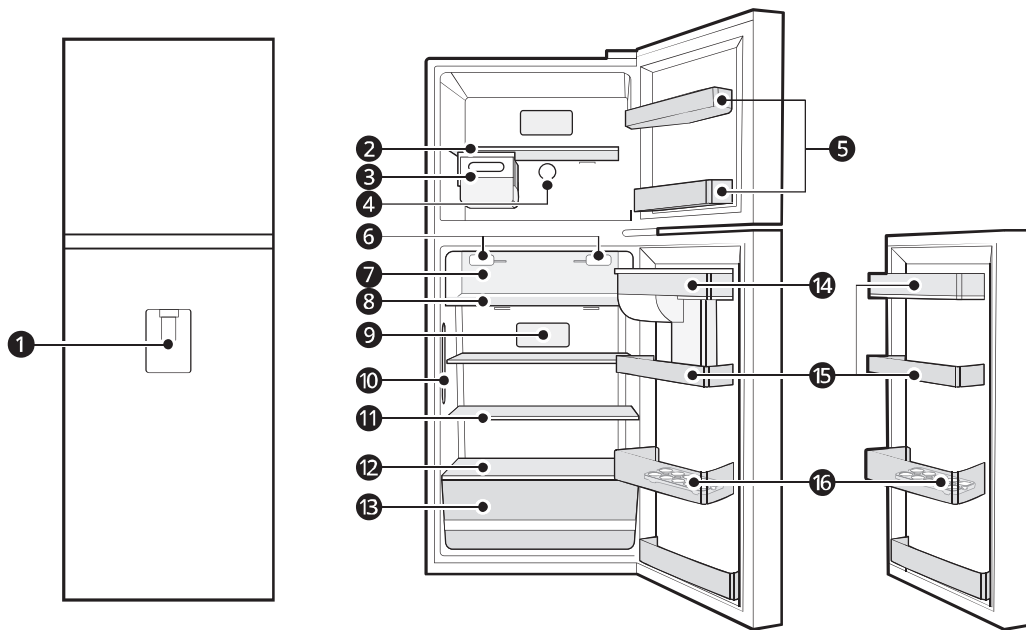
## 14 OPERATION

### Product Features

The appearance or components of the appliance may differ from model to model.

#### Interior

\*1 This feature is only available on some models.



**1 Water Dispenser**<sup>\*1</sup>

**2 Freezer Shelf**

Stores frozen foods such as meat, fish, and icecream.

**3 Moving Icemaker**<sup>\*1</sup>

This is where ice is manually produced and stored.

- You can slide the icemaker along the shelf from side to side to any desired position.

**4 Freezer Temperature Controller**<sup>\*1</sup>

This controller regulates the air flow to the freezer compartment by setting it to a suitable balance.

**5 Freezer Door Basket**

Stores small packages of frozen food. Do not store ice cream or food which will be stored for a long period of time.

**6 Air filter**

Reduces odours inside the fridge compartment.

**NOTE**

- Do not disassemble the air filter. If you want to replace it, please contact the LG Electronics customer information centre.

**7 Fresh Room\*<sup>1</sup>**

This is where food items are stored at a colder temperature than the regular fridge area.

**8 Pull Out Tray**

**9 Fridge Temperature Control Panel\*<sup>1</sup>**

Sets the fridge temperature.

**10 Door Cooling**

Cold air comes out to keep the fridge door basket cool.

**11 Fridge Shelf**

Stores refrigerated foods and fresh foods.

Stores the foods with higher moisture content at the front of the shelf.

The shelf height can be adjusted by inserting the shelf in another groove of different height.

**12 Bottom Shelf**

Stores refrigerated foods and fresh foods.

**⚠ CAUTION**

- Do not store any items at the front of the bottom shelf. The items may fall and cause an injury or appliance damage.

**13 Fridge Drawer**

Stores fruits and vegetables.

**14 Water Tank\*<sup>1</sup>**

This is where water is stored to supply the dispenser.

**15 Fridge Door Basket\*<sup>1</sup>**

Stores small packages of refrigerated foods, drinks and sauce containers.

**16 Movable Egg Tray**

This is where eggs are stored.

- You can move it to and use it at a desired position as needed. However, do not use it as the ice bin or place it on the shelf on top of the fridge or the vegetables drawer.

## 16 OPERATION

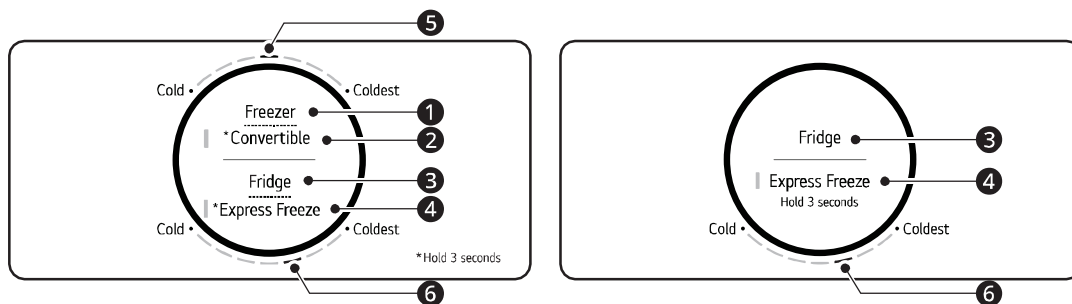
### Control Panel

The actual control panel may differ from model to model.

#### Control Panel and Functions

\*1 This control panel is only available on some models.

##### Control Panel 1: Inside the Fridge\*1 Type A



##### 1 Freezer

Press this button repeatedly to select a desired temperature between **Cold** and **Coldest**.

- The default freezer temperature is 5.

##### 2 Convertible

You can set the freezer temperature to the same range as the fridge temperature.

- Press this button for 3 seconds. When the left LED light lit, press the **Fridge** button repeatedly to select a desired temperature between **Cold** and **Coldest**.
- Press this button for 3 seconds to disable Convertible function, as LED light off.

##### 3 Fridge

Press this button repeatedly to select a desired temperature between **Cold** and **Coldest**.

- The default fridge temperature is 6.

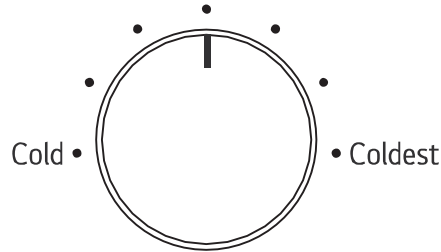
##### 4 Express Freeze

This function can quickly freeze a large amount of ice or frozen foods.

- This function is enabled and disabled in turn each time you press the button for 3 seconds.
- This function automatically terminates after a specific period has passed.

##### Type B

Turn the dial to select a desired temperature between **Cold** and **Coldest**.

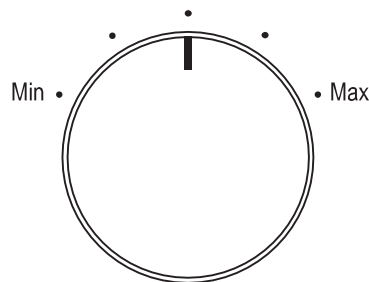


**NOTE**

- For optimal food preservation, increasing or decreasing one level from the default temperature is recommended.

**Control Panel 2: Inside the Freezer\*1**

Turn the dial to select a desired temperature between **Min** and **Max**.



**NOTE**

- For optimal food preservation, increasing or decreasing one level from the default temperature is recommended.

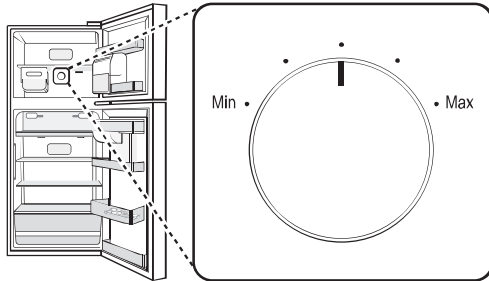
**Setting the Freezer Temperature Level (1-5)**

The temperature can be adjusted from level 1 to level 5. Level 3 is recommended.

- You can lower the temperature by turning the controller to the right and raise the temperature by turning the controller to the left.
- Setting the controller at level 4-5 will maintain a low temperature in the freezer. When the quick

## 18 OPERATION

freezing is finished (level 5), set the controller to the recommended level.



### NOTE

- Wait until 2 or 3 hours have passed after connecting the appliance to the outlet before storing food in the appliance.
- The internal temperatures could be affected by the location of the appliance, the ambient temperature, the frequency of door opening and so on.

### CAUTION

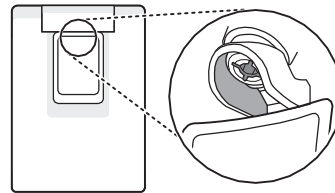
- Keep children away from the dispenser to prevent children playing with or damaging the controls.

### NOTE

- If the cup rim is small, water may splash out of the glass or miss it completely.

### Cleaning the Dispenser

- Wipe the entire area with a damp cloth. The dispenser may become wet easily due to spilled water.
- Wipe the dispenser outlet frequently with a clean cloth as it may get dirty easily.



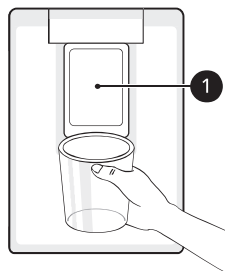
## Water Dispenser

This feature is only available on some models.

### Using the Dispenser

You can dispense water by pressing the lever.

- Press the paddle **1** of the water dispenser to get cold water.



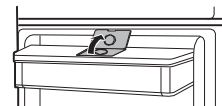
### NOTE

- Lint from a cloth may adhere to the outlet.

### Filling the Water Tank

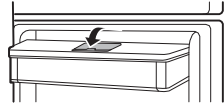
The water tank holds the water which is to be dispensed.

- 1 Open the cap on the top of the water tank.

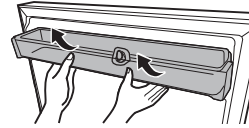




- 2 Fill the water tank with potable water and close the cap.



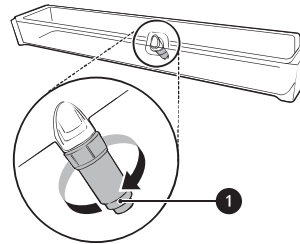
- 3 Hold the water tank with both hands and pull it up.



### ⚠ WARNING

- Fill with potable water only. Do not fill the water tank with beverages or hot water.
- Children should not be allowed near the water tank.

- 4 Remove the water valve ❶ in the water tank by turning it clockwise.



### ⚠ CAUTION

- Do not apply excessive force or impact when removing or assembling the water dispenser tank.

- 5 Clean the water tank and the water valve in running water. Wipe the inside and outside of the water tank and the fridge door with a clean cloth.

### NOTE

- The water tank should be washed before filling it with potable water.
- If water does not come out, fill the water tank with potable water.

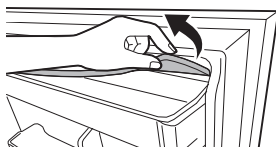
- 6 Mount the water tank in the reverse order of the removal process.

### NOTE

- Clean water tanks if they have not been used for 48 hours.

## Cleaning the Water Tank

- 1 Remove the water tank cover.



- 2 Empty the water tank.

## Icemaker

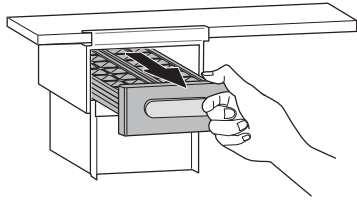
This feature is only available on some models.

### Using the Moving Icemaker

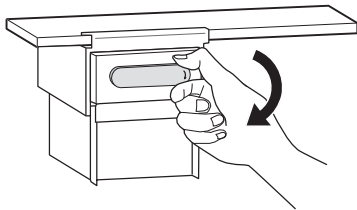
This is where ice is manually produced and stored.

## 20 OPERATION

- 1 Pull out the ice tray from the Icemaker.



- 2 Fill the ice tray with water up to the marked water line.
- 3 Hold and push the ice tray back to its original position.
- 4 Hold the lever of the ice tray and turn it clockwise to release the ice cubes.



- 5 Hold the handle of the ice basket and pull out it.

### ⚠ WARNING

- Fill with potable water only.

### ⚠ CAUTION

- Be careful not to spill water when pushing the ice tray.
- Be careful not to twist the ice tray with force as it can be broken.
- If you open and close the freezer door frequently, it may take longer for water to be frozen.
- Do not fill the ice basket with water.

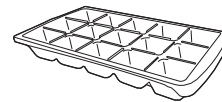
### NOTE

- You can remove the ice maker to create more space inside the freezer compartment if you do not use it.
- If the ice tray is overfilled, the ice cubes may stick together and be difficult to remove.
- Ice can be removed more easily by pouring water on the ice tray.

### Using the Ice Tray

This is where ice is manually produced.

Fill the ice tray with water up to the marked water line.



### ⚠ WARNING

- Fill with potable water only.

### ⚠ CAUTION

- Be careful not to twist the ice tray with force as it can be broken.
- If you open and close the freezer door frequently, it may take longer for water to be frozen.

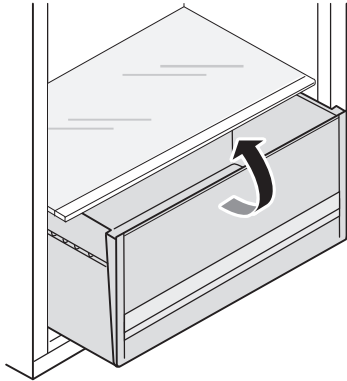
### NOTE

- If the ice tray is overfilled, the ice cubes may stick together and be difficult to remove.
- Ice can be removed more easily by pouring water on the ice tray.

## Fridge Drawer

### Removing and Refitting the Fresh Vegetable Drawer

- 1 Remove the contents of the drawer. Hold the handle of the vegetable drawer and gently pull it out outward until the drawer stops completely.
- 2 Lift the vegetable drawer up and remove it by pulling it out.



- 3 Mount the vegetable drawer in the reverse order of the removal process.

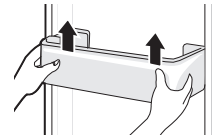
### **CAUTION**

- Remove all food from inside the appliance, otherwise injuries can be caused by the weight of stored foods.

## Door Basket

### Removing/Refitting the Door Basket

- 1 Hold both edges of the basket and remove it by lifting it upward.

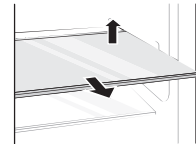


- 2 Refit the door basket in the reverse order of the removal process.

## Shelf

### Removing/Refitting the Shelf

- 1 Hold the both side of the shelf. Lift the shelf up and remove it by pulling it out.



- 2 Refit the shelf by sliding it inward until the shelf snaps into the frame.

## 22 OPERATION

---

### **⚠ CAUTION**

- Do not place food on the marked area ① of the bottom shelf. The fridge door may not close completely.

